



CONNECT, VIEW, AND RECORD: 4 CAMERAS TO MONITOR YOUR VEHICLE



1 BACKUP – Operators have increased safety by enabling them to view what's behind the truck with ease.



2 HOPPER – Easily monitor the salt level by orienting a camera toward the hopper. This means less time guessing how much salt the operator has remaining and more time on the road.



3 SPREADER – Operators can clearly see their spread pattern, allowing them to not overspread material onto the road.



4 WING – Effortlessly view the side of the truck where the wing plow will be deployed to ensure safety.

(more features listed on inside panel)

Muncie Power Products has developed industry leading hydraulic and control solutions for a variety of snow and ice applications. The Omni-System® Plus works on the below applications:



Light-Duty



Medium-Duty



Heavy-Duty

MEETING THESE NEEDS

Class 5 to Class 8 Chassis	✓
Data Logging	✓
Wing / Scraper Plows	✓
Hoists (Telescopic / Rod)	✓
Front Plow Options	✓
Pre-Wet (Electric / Hydraulic)	✓
Side Dump	✓
Tow Plows	✓
Tarp Cover	✓
Plow Power Float	✓
Swap Loader / Hooklift-Type Systems / Winches	✓
Multiple Body Applications	✓
Directional Spinner Systems	✓
Anti-Ice	✓
Precision Placement / Directional Cast System	✓
Broom Circuits	✓
Precision Placement / Directional Cast System	✓
Tailgate / V-Body / Muni-Body Spreader Systems	✓



MUNCIE POWER PRODUCTS
A MEMBER OF THE INTERPUMP GROUP

Omni-System® Plus



ADVANCED SNOW & ICE CONTROL SOLUTIONS



Omni-System Plus

The Omni-System Plus is a high-level technology solution for snow and ice control systems that increases reliability and revolutionizes the way in which your fleet is operated and maintained. This system includes integrated CAN-BUS technology to minimize wires and improve reliability. With features like remote diagnostic support via Wi-Fi, flow sharing, cartridge valve technology, multi-camera functionality, video playback, and enhanced data-logging, we're changing the game—big time.



KEY FEATURES



INTUITIVE CONTROL SETUP

Turnkey ready system is easier to setup and operate



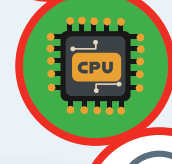
CARTRIDGE VALVE DESIGN

Premium solution for hydraulic circuits: reduces internal hose connections for simpler install, easier to service, and includes flow sharing to keep all functions operating



NEW CONTROL PANEL

New rigid construction better protects electrical hardware



EXPANDED CAPABILITIES

Improved operator performance and processing capability



LARGER 7" TOUCHSCREEN

Vivid, easy-to-read capacitive touchscreen



JOYSTICK CONTROL OPTIONS

Multiple joystick configurations available for optimum cylinder control



INTERNAL GPS ANTENNA

Prevents operators from disconnecting GPS tracking



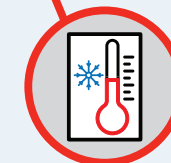
DRIVE-BY DOWNLOAD CAPABILITY

Integrated with Wi-Fi connectivity



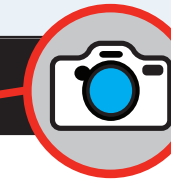
REMOTE DIAGNOSTICS

Remotely connect to Muncie Power for setup and diagnostic assistance



AIR AND ROAD TEMPERATURE SENSOR

Provides operators with current and accurate data to make application decisions



INNOVATIVE CAMERA CAPABILITIES



SAFETY

Operator has clear line of sight of obstacles, including people that may be standing nearby



CAMERA WASH

Cameras are compatible with various camera wash systems



MATERIAL CONSERVATION

Easily view the spread pattern and better utilize granular materials being output from the system



DIGITAL VIDEO RECORDING (DVR)

Record up to 2 channels simultaneously and export files onto a USB drive or 32 GB SD card



EQUIPMENT CONSOLIDATION

Reduce installation time and wiring complexity by utilizing one display for both spreader control and camera viewing



4X SURROUNDING VIEWS

Up to 4 camera can be connected into the systems (*more details on other side*)

VIDEO PLAYBACK CAPABILITIES



SYSTEM SETUP

Preloaded training videos guide personnel on how to setup and calibrate the Omni-System Plus



VIDEO PLAYBACK

Shorten the learning curve for new operators with preloaded onboarding videos in the controller to be viewed in cab